

OUR MISSION

AIR & WATER-TIGHT BUILDING ENCLOSURE



OUR PROVEN PROCESS TO ASSIST

- #1 – Manage your buildings like the valuable asset it is with **Professional Assessments & Repairs.**
- #2 – Keep your good buildings good by implementing a **Preventive Maintenance Plan.**
- #3 – Deliver **Sustainable & Solution Oriented Plans** that are better for your budget & planet.

Greetings Ohio School Professionals -

I'm your local Building Enclosure Advisor for Tremco based out of Springboro. My partner and technical expert Cody Leugers lives in St. Mary's. Together we have the knowledge and resources to provide roof and building enclosure asset management through professional assessments, preventive maintenance and/or detailed repairs lead by our factual data driven diagnostics program.

Our goal is to provide budget conscious long term solutions to maximize building performance keeping the water out and the conditioned air in. Consequently, based on previous performance, we are grateful that our services and materials may continue to be procured through **THE AEP COOPERATIVE GOVERNED BY THE EPC.**

Cody & I would greatly appreciate an opportunity to have a conversation with your team to discuss how we may assist to keep the inside of your buildings healthy & dry.

All the Best!

Todd Linklater

Field Advisor

tlinklater@tremcoinc.com

937-626-5967

Key Component for Maintaining a Healthy & Dry Building

- Properly diagnose the source of infiltration to keep the water out and the conditioned air in.

Tremco offers no-obligation wall inspections to provide you the most beneficial solution to your particular wall restoration need.

Your wall inspection will cover two main areas – the condition of the walls and the issues spotlighted here. Special attention is given to areas such as the sealants around window sills, frames, trim and fascia.



FLAKING OR
PEELING PAINT



MILDEW
OR FUNGUS



CHALKING



CRACKS –
HAIRLINE
OR LARGER



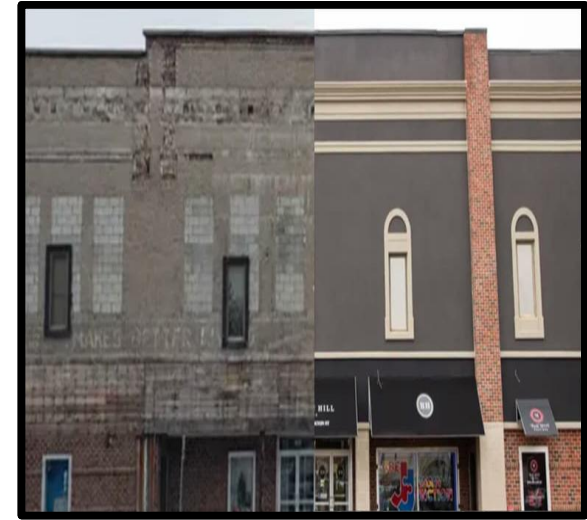
SPALLING
AND EROSION



EFFLORESCENCE



LOOSE OR
MISSING MORTAR



**ROOFING & BUILDING
ENVELOPE CONSULTATION**

TREMCO
ROOFING & BUILDING MAINTENANCE

